



Conference Package:

R250 excl VAT per delegate per day

Notepad, pen, water and mints

2 x Tea Breaks and Lunch (coffee and tea throughout conference)

Use of terrace/waiting area and cocktail furniture.

Includes use of all breakaway rooms

Waitrons and Barmen included

Client Specify Audio-visual – Quoted separately

Tea Breaks Include:

Freshly baked, Roosterbrood Variety Muffins & Scones with bowls of Grated Cheese, preserves & Farm Butter

Luncheon Includes:

MAIN COURSES – Choice of two per group

Italian Style Beef or Chicken Lasagna

Cape Malay Chicken/Lamb Curry presented with Lentil Rice

Chicken & Mushroom Stroganoff served with Creamed Potatoes

Golden Roast BBQ Chicken & Rich Pan Gravy & Savory Rice

Beef Stroganoff with Cream, Brandy Mushrooms & Creamed Potatoes

All served with a Roasted Vegetable Selection, Salad and Dinner Rolls

DESSERT: Fresh Fruit Skewers & Chocolate Brownies



OUR VENUE OFFERS:

Services that are at your disposal as part of our “*service excellence*” approach:

(These are also important details to consider when choosing your event or conference venue)

Air-conditioning - We offer an air conditioned breakaway and conference venue.

Back-up Generator – our generator can carry our entire venue’s electricity load.

Bar Prices - Our bar prices are very competitive. A full bar price list is available. Solely Slipperfields will run the bar facilities, non-negotiable.

Budget - We work around your decor and catering budget. We understand that your event comes at a price even though our superb service comes standard.

Lavatories - Slipperfields has immaculate water closet facilities, accessible from outside the venue so that guests need not enter reception venue before the reception commences.

Personal Service - Clients can be sure of personal service and attention to detail on the day with a wedding coordinator always present.

Photos - Photographers that have had the pleasure to shoot events at Slipperfields will testify to the unique backdrop offered at our venue and surrounding area.

Rain/Wind - If it rains or is a windy day, Slipperfields offers an enclosed waiting area for guests.

Space - We offer a 300m2 breakaway / dining area & a 600m2 reception/conference venue – both of which can be reduced in size.

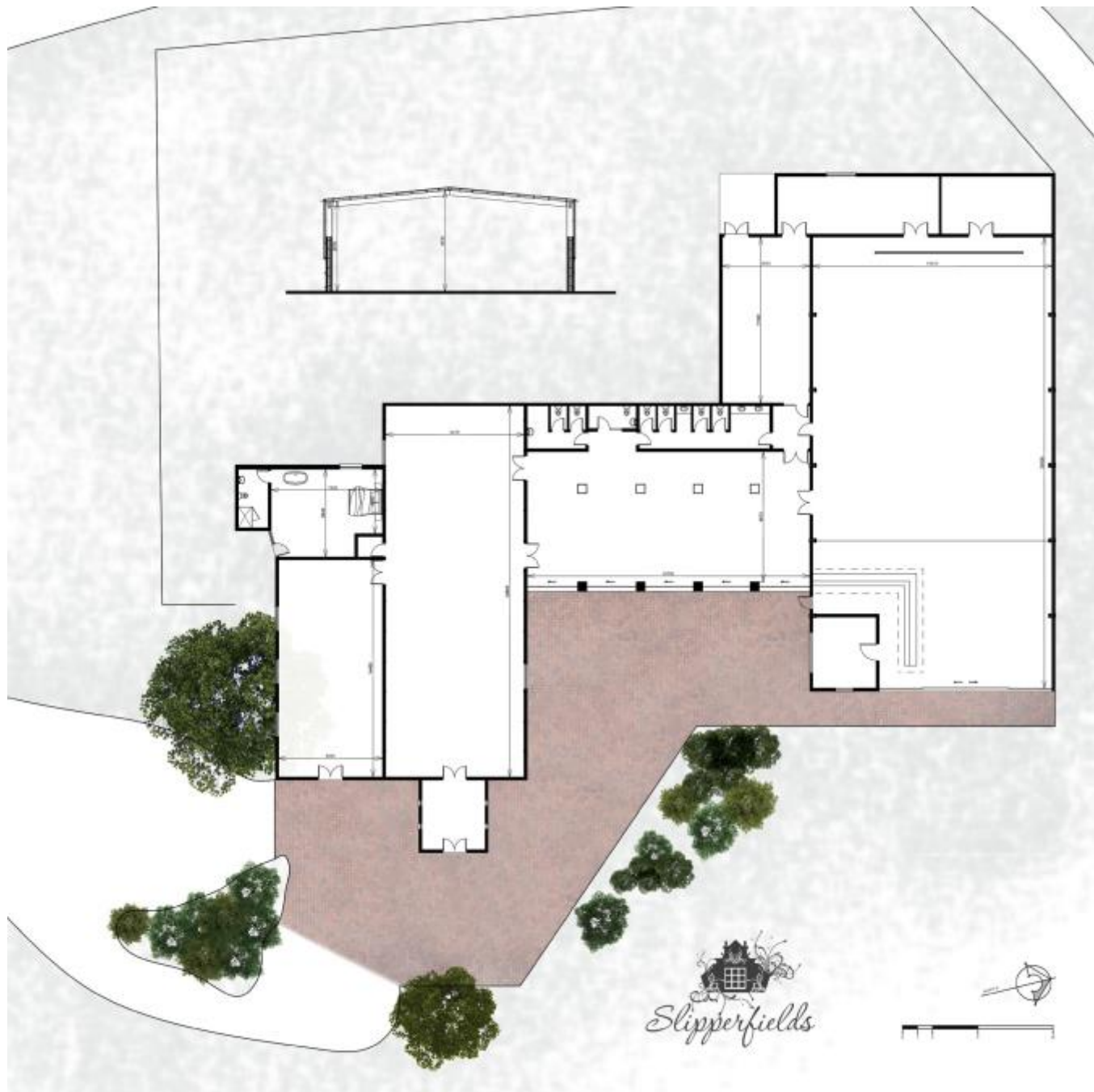
Trained Staff - All bar, waitrons and kitchen staff are professionally trained and dressed appropriately.

Events Coordinator - Each event has an ascribed on-the-day event coordinator.

Wheelchair accessible – Venue entrances and doorways are all wheelchair friendly.

Wine List and Cellar - We offer an extensive wine list for all tastes. We allow wine and champagne to be brought into the venue; however, corkage will be charged maximum 2 bottles of wine and 2 bottles of sparkling wine per table.





ABOUT SLIPPERFIELDS

Slipperfields is your ideal country-side setting for an intimate or extravagant event, a mere 20-minute drive from Port Elizabeth, nestling at the foot of the Lady Slipper.

A spacious reception hall is complemented by a unique on-site chapel which can accommodate 300+ guests. The rustic barn ambiance is enhanced by an expanse of green pastures and a splendid view of the Slipper Mountain. The infusion of country tranquility and city elegance makes Slipperfields the superb setting for your wedding day dream.

The conference facilities can easily accommodate

450+ guests for corporate launches and events. A number of smaller break-away rooms can provide the ideal environment for strategy meetings or personalized think-tanks. Fresh country air and natural surroundings will keep delegates alert and motivated.

Farm living and natural surroundings set the perfect backdrop for children's parties and educational school excursions.

Don't hesitate to contact us as we would love to show you around before we host your special event.

TECHNICAL/ SOUND/ LIGHTING
EQUIPMENT NOT INCLUDED
FULLY LICENSED BAR

